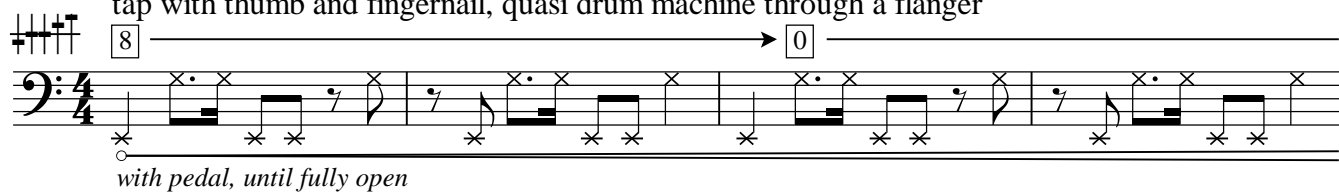


'N Bass

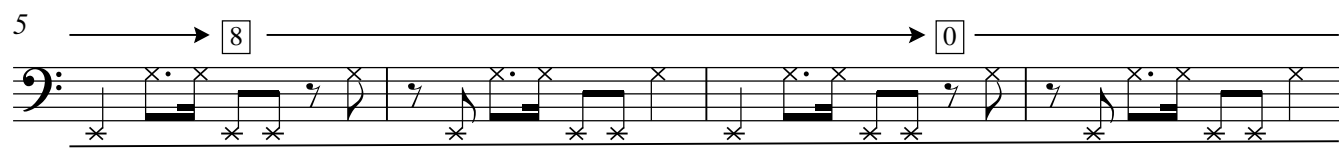
SIMON LESLEY

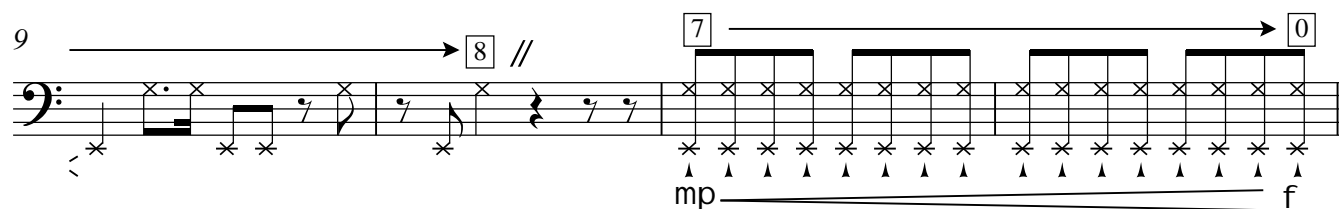
Trippy-hectic drum'n'bass q = 150

tap with thumb and fingernail, quasi drum machine through a flanger

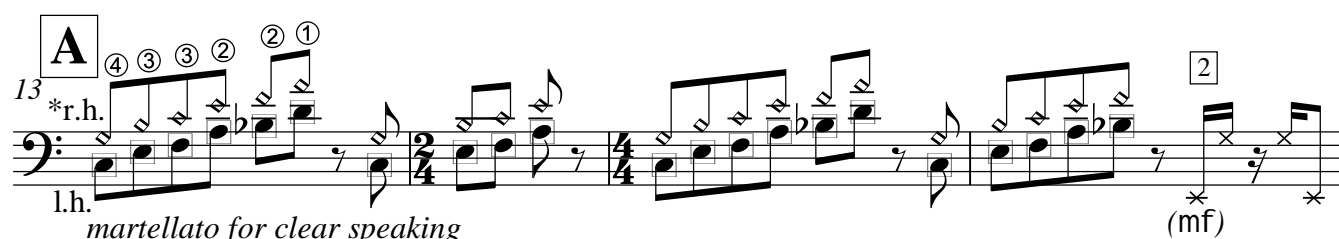
8  0

with pedal, until fully open

5  8 0

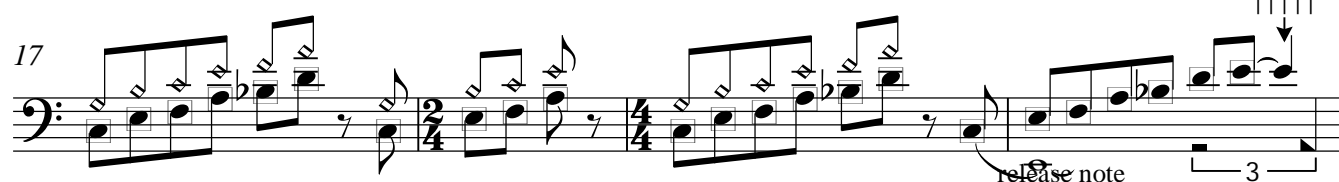
9  8 // 7 0

mp f

13  2

*r.h.
l.h.
martellato for clear speaking
(mf)

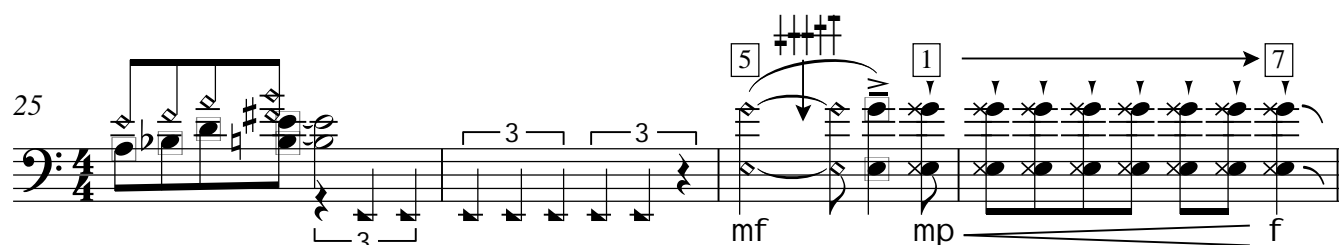
*harmonic node may be placed one octave higher than written

17  3 3

release note

21  3 3

palm mute

25  5 1 7

mf mp f

B

29 3 4 1 3

fff heavy plucking so both notes speak *mf* *(*)* *fff*

v v

34 4 0

39 10 **C** **Funky** 3

42

with pedal

45

<f

49

53

57

61

65

69

73

76 **D**

fff heavy plucking so both notes speak

mf

80

fff

p

84 **E** More guarded, but gradually building to **F**

p

87

90

92

95

scrape string with fingernail

gradual change of sound

98

mp

101

104

107

110



113

117

Really build now

121

125

128

if poss.
(+ + + +)**F** Funky again

131

135

139

143

quasi delay

147

Palm mute

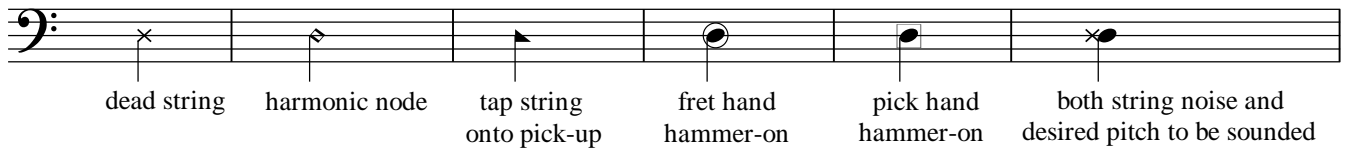
150

155

158

gradually de-tune A string quasi pitch shifter

Key to notation



This symbol gives a general guide to the desired EQ.

The five columns signify low, low-mid, mid, high-mid and high frequencies.

The middle line signifies 0dB with an upper and lower range of around +6dB to -6dB.

Changes of EQ can be made either with the tone controls on the instrument or by any separate unit.

①②③④ Indicates which string to play.

Dynamics are notated as usual, to be observed by plucking louder or quieter except where indicated with the instruction 'with pedal' which requires the use of a volume pedal.