

**TRANSFORMATIONS OF THE IMAGE OF ST JOSEPH IN EARLY
MODERN ART**

JANET ELIZABETH HOPE

A thesis submitted in partial fulfilment of the requirements of Birmingham City
University for the degree of Doctor of Philosophy

Birmingham City University

Birmingham Institute of Art and Design.

Volume II

Illustrations

June 2011



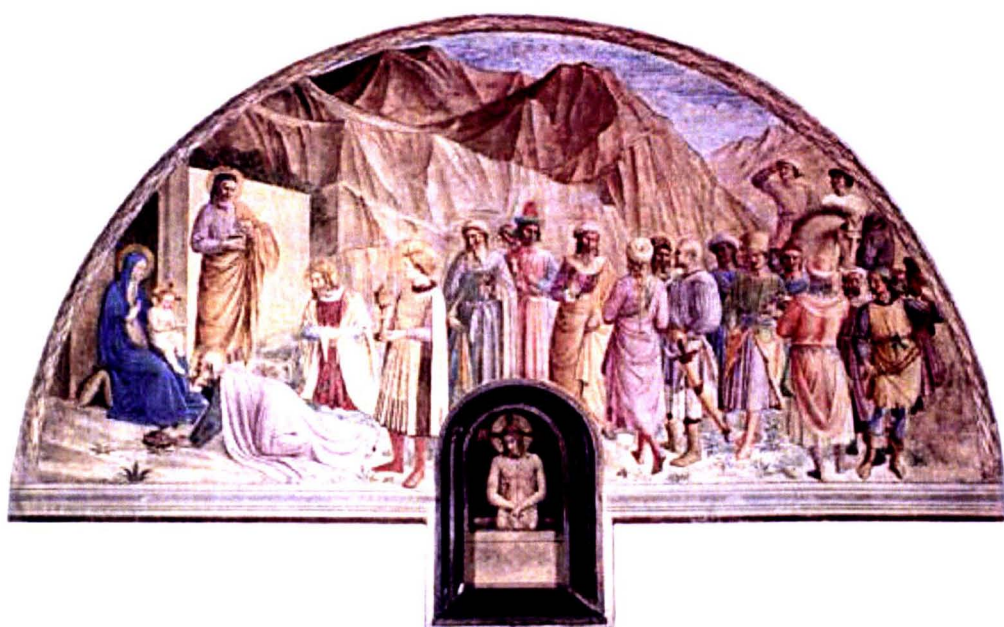


Plate 1 Benozzo Gozzoli. *Adoration of the Magi*. 1440 – 1441. Fresco. Cell 39, Convent of San Marco, Florence, Italy.



Plate 2 Robert Campin also known as the Master of Flémalle. The Mérode Altarpiece.
1425 – 1435. Triptych. Oil on wood. The Cloisters Collection,
Metropolitan Museum of Art, New York, USA.



Plate 3 Attrib. Master Bertram. The Petri-Altar also known as the Grabow Altar. Late 1370s to early 1380s. Tempera on panel. Kunsthalle Museum, Hamburg, Germany.



Plate 4 Perugino. *Betrothal of the Virgin*. 1504. Oil on panel. Musée des Beaux-Arts, Caen, France.



Plate 5 Raphael. *Betrothal of the Virgin*. 1504. Oil on panel. Pinacoteca di Brera, Milan, Italy.



Plate 6 Anon. *Jesus the Good Shepherd*. Fourth century CE. Fresco. Catacomb of the Jordani, Rome, Italy.



Plate 7 Anon. *Orpheus the Good Shepherd*. Mid-third century CE. Fresco. Catacomb of Priscilla, Rome, Italy.



Plate 8 Anon. *Virgin and Child*. First quarter fourth century CE. Fresco. Coemeterium Maius, Rome, Italy.



Plate 9 Anon. *Isis and Horus*. Late Period 664-332 BCE. Bronze. Egyptian Museum, Cairo, Egypt.



Plate 10 Anon. *Adoration of the Magi*. Third century CE. Marble relief. Sarcophagus.
Vatican Museums, Rome, Italy.



Plate 11 Anon. *Balaam pointing out a star to Mary*. First half third century CE. Fresco. Catacomb of Priscilla, Rome, Italy.



Plate 12 Anon. *Nativity*. 330-335 CE. Marble relief. Sarcophagus of Senator Marcus Livius Drusus Claudianus. Museo Nazionale, Rome. Italy.



Plate 13 Anon. *Sarcophagus of the Nativity*. Late fourth century CE. Marble. Originally from Alyscamps Necropolis near Arles. Arles Musée Lapidaire d'Art Chretien, France.



Plate 14 Anon. *Hercules*. Mid fourth century CE. Fresco. Catacomb Via Latina, Rome, Italy.



Plate 15 Anon. *Joseph receives warning from the angel*. Fifth century CE. Mosaic.
Santa Maria Maggiore, Rome. Italy.



Plate 16 Anon. *Presentation in the Temple*. Fifth century CE. Mosaic. Santa Maria Maggiore, Rome, Italy.



Plate 17 Anon. *Angel's second visitation to Joseph*. Fifth century CE. Mosaic. Santa Maria Maggiore, Rome, Italy.



Plate 18 Anon. *Holy Family welcomed by Aphrodisius*. Fifth century CE. Mosaic. Santa Maria Maggiore, Rome, Italy.



Plate 19 Anon. *Joseph's first dream concerning the Virgin's purity*. Fifth century CE.
Ivory relief. Werden Casket. Victoria and Albert Museum, London, England.



Plate 20 Anon. *Entry of Joseph and the Virgin into the Temple for the trial by ordeal of drinking the bitter water.* Fifth century CE. Ivory relief. Werden Casket. Victoria and Albert Museum, London, England.



Plate 21 Anon. *Trial by drinking the bitter water*. 545 CE. Ivory relief. Throne of Archbishop Maximian. Museo Arcivescovile, Ravenna, Italy.



Plate 22 Anon. *Joseph's Dream and the Journey to Bethlehem*. 545 CE. Ivory relief.
Throne of Archbishop Maximian. Museo Arcivescovile, Ravenna, Italy.



Plate 23 Anon. *Nativity*. Loca Sancta. Sixth century CE. Wooden reliquary box. Vatican Museums, Rome, Italy.



Plate 24 Anon. *Adoration of the Magi*. Seventh century CE. Bronze medallion from the Minden Grave. Rhinelandes Museum, Trier, Germany.



Plate 25 Anon. *Nativity*. Tenth century CE. Fresco. Coptic. Church of the Holy Virgin, Monastery of the Syrians, Wadi Natrum, Syria.



Plate 26 Anon. *Joseph's Dream*. Late tenth century CE. Egbert Codex. Manuscript illumination. Inks on vellum. Trier Stadtbibliothek, Trier, Germany.



Plate 27 Anon. *Nativity*. Tenth century CE. Menologion of Basil II. Illumination. Inks on vellum. Vatican Library, Rome, Italy.



Plate 28 Anon. *Flight into Egypt*. Eleventh century. Ivory relief. Salerno Cathedral, Diocesan Museum, Salerno, Italy.

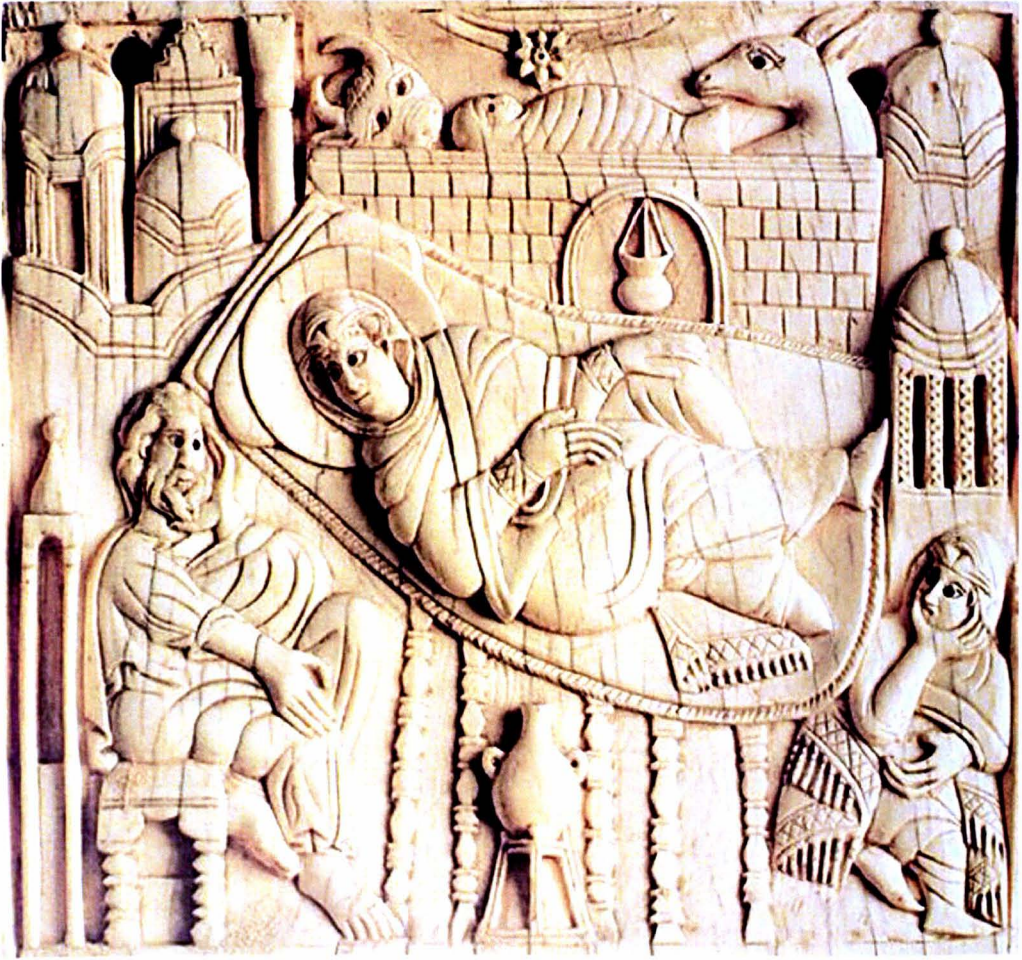


Plate 29 Anon. *Nativity*. Eleventh century. Ivory relief. Salerno Cathedral, Diocesan Museum, Salerno, Italy.



Plate 30 Anon. *Nativity*. Twelfth century. Mosaic. Palatine Chapel, Palermo, Sicily.

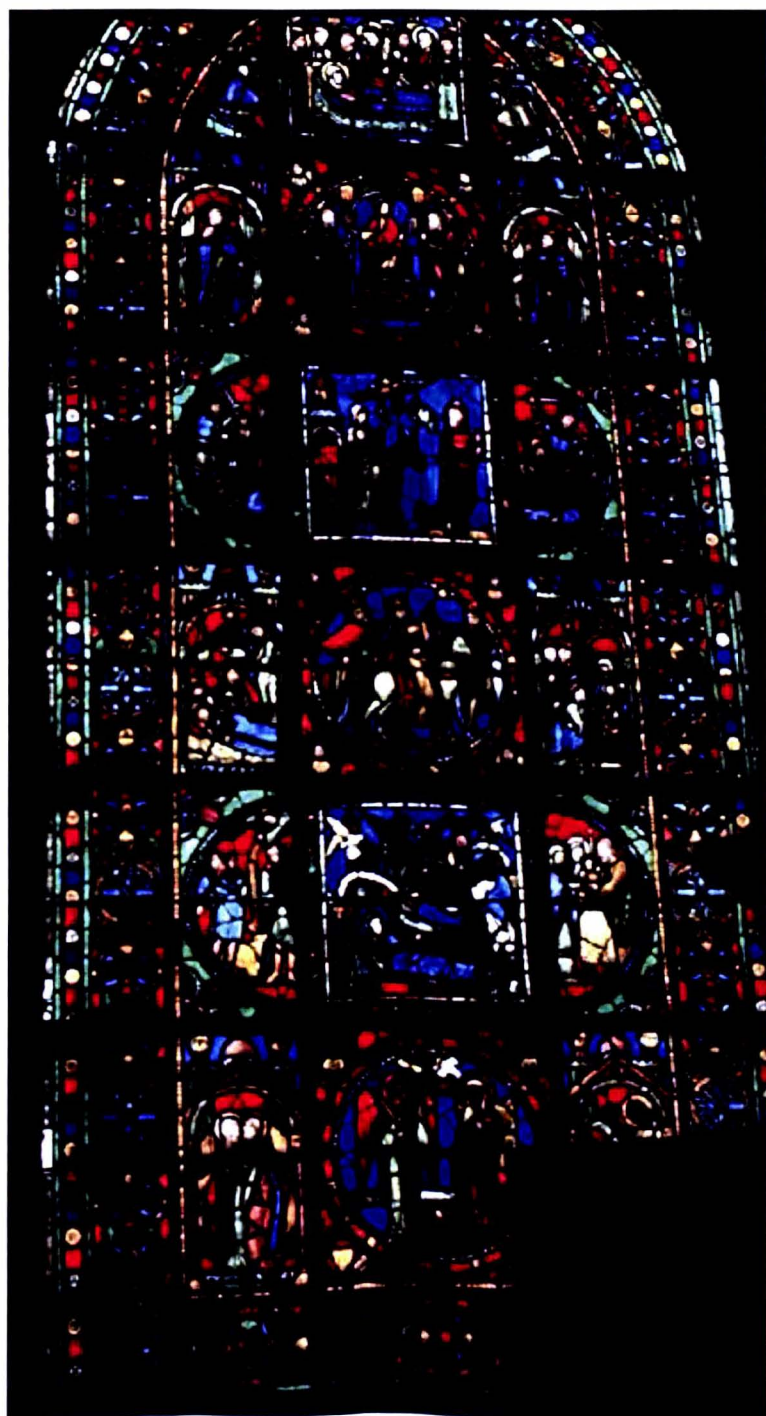


Plate 31 Anon. *Infancy Window or Life of the Virgin Window*. Twelfth century. Stained glass. Abbey Church of St-Denis, Paris, France.

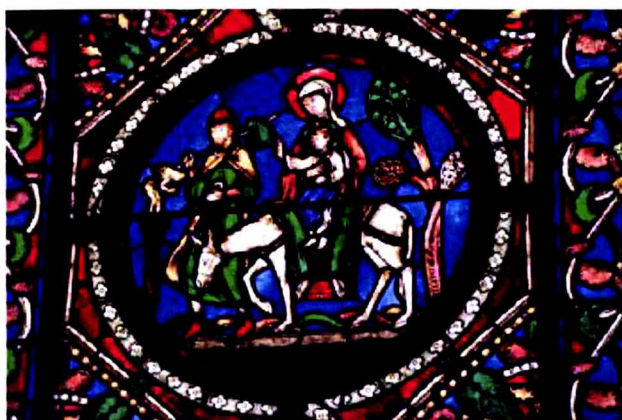


Plate 32 Anon. *Flight into Egypt*. Twelfth century. Stained glass. Abbey Church of St-Denis, Paris, France.



Plate 33 Anon. *Joseph's Dreams*. Twelfth century. Stained glass. Abbey Church of St-Denis, Paris, France.

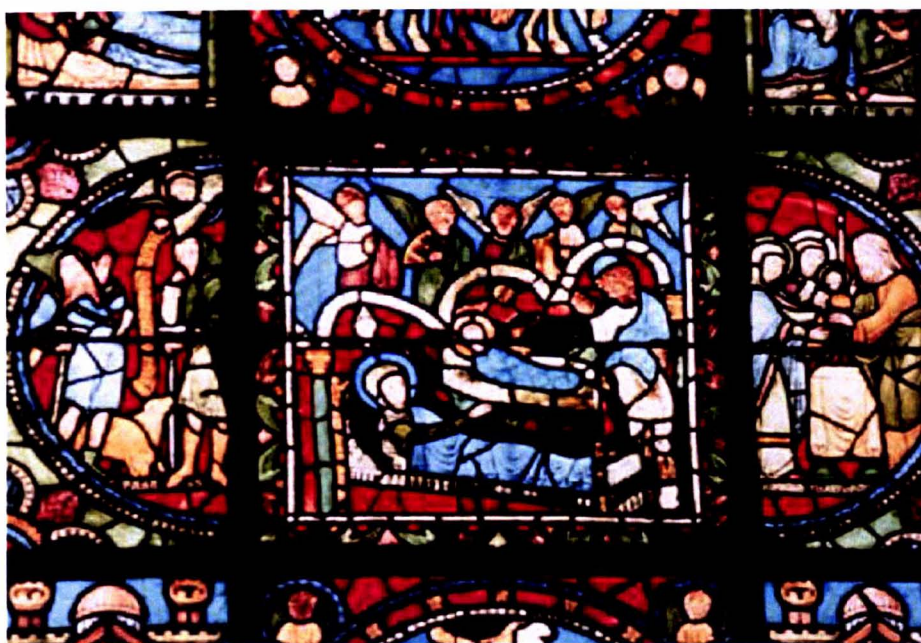


Plate 34 Anon. *Nativity*. Twelfth century. Stained glass. Abbey Church of St-Denis, Paris, France.



Plate 35 Attrib. Gislebertus. *St. Joseph marvels at the Adoration of the Magi*. First half twelfth century. Stone capital. Cathedral of St. Lazare, Autun, France.



Plate 36 Anon. *Flight into Egypt*. Twelfth century. Stone capital. Cathedral of St. Lazare, Autun, France.



Plate 37 Anon. *Nativity*. Late twelfth century. Stammheim Missal. Tempera, gold, silver and ink on parchment. John Paul Getty Museum, Los Angeles, California, USA.



Plate 38 Anon. *Nativity*. Early thirteenth century. Tempera on panel. Museu Nacional d'Art de Catalunya, Barcelona, Spain



Plate 39 Anon. *Nativity*. Early thirteenth century. Stone relief. Lady Chapel, Worcester Cathedral, Worcester, England.



Plate 40 Anon. *Presentation in the Temple* (detail). Thirteenth century. Stone sculpture. West portal, Rheims Cathedral, Rheims, France.



Plate 41 Anon. *Nativity*. Mid thirteenth century. Stone sculpture. North portal, Chartres Cathedral, Chartres, France.

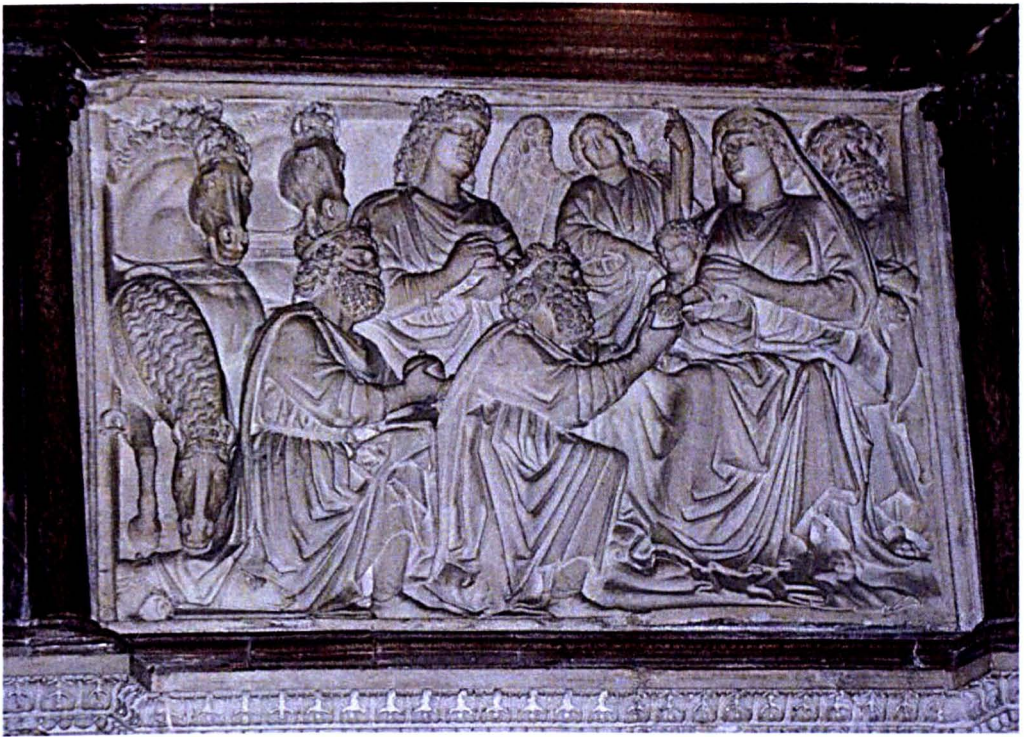


Plate 42 Nicola Pisano. *Adoration of the Magi*. 1260. Marble relief. Pulpit, Baptistery, Pisa, Italy.



Plate 43 Nicola Pisano. *Annunciation and Nativity*. 1260. Marble relief. Pulpit, Baptistery, Pisa, Italy.



Plate 44 Nicola Pisano. *Presentation in the Temple*. 1260. Marble relief. Pulpit, Baptistery, Pisa, Italy.



Plate 45 Attrib. Guido da Siena. *Nativity*. ca. 1270. Tempera on panel. Louvre Museum, Paris, France.



Plate 46 Attrib. Guido da Siena. *Presentation in the Temple*. ca. 1270. Tempera on panel. Louvre Museum, Paris, France.



Plate 47 Pietro Cavallini. *Nativity*. Late thirteenth century. Mosaic. Santa Maria in Trastevere, Rome, Italy.



Plate 48 Anon. Triumphal Arch. Fifth century CE. Mosaic. Santa Maria Maggiore, Rome, Italy.



Plate 49 Pietro Cavallini. *Adoration of the Magi*. Late thirteenth century. Mosaic. Santa Maria in Trastevere, Rome, Italy.



Plate 50 Pietro Cavallini. *Presentation in the Temple*. Late thirteenth century. Mosaic. Santa Maria in Trastevere, Rome, Italy.

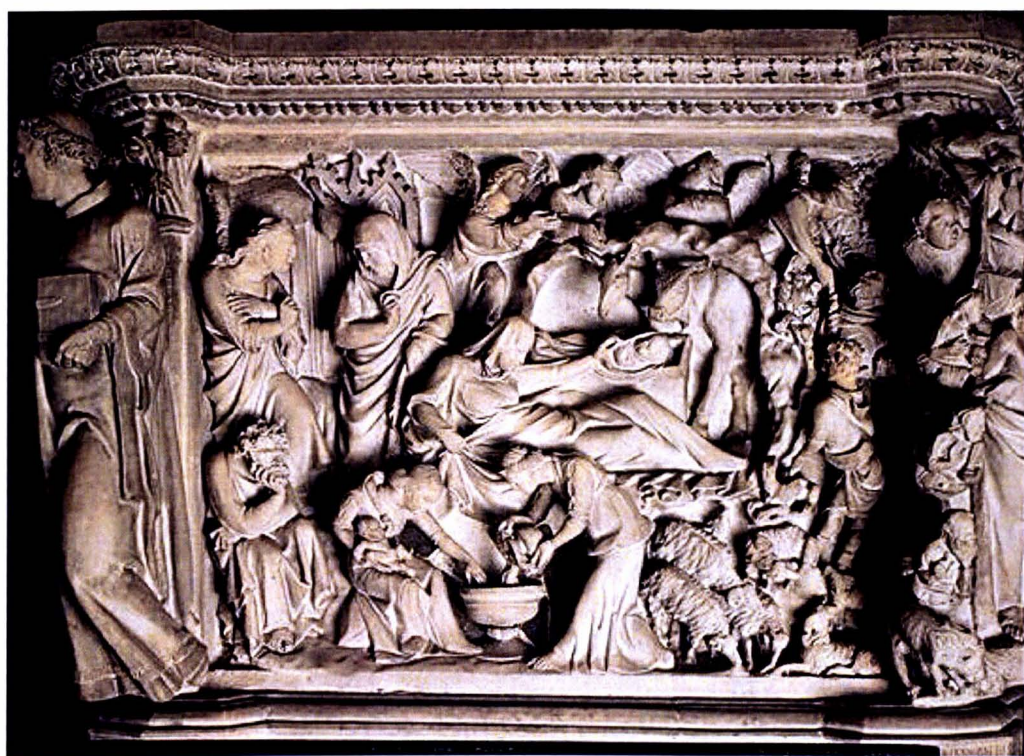


Plate 51 Giovanni Pisano. *Annunciation and Nativity*. 1300. Marble relief. Pulpit, Sant'Andrea, Pistoia, Italy.

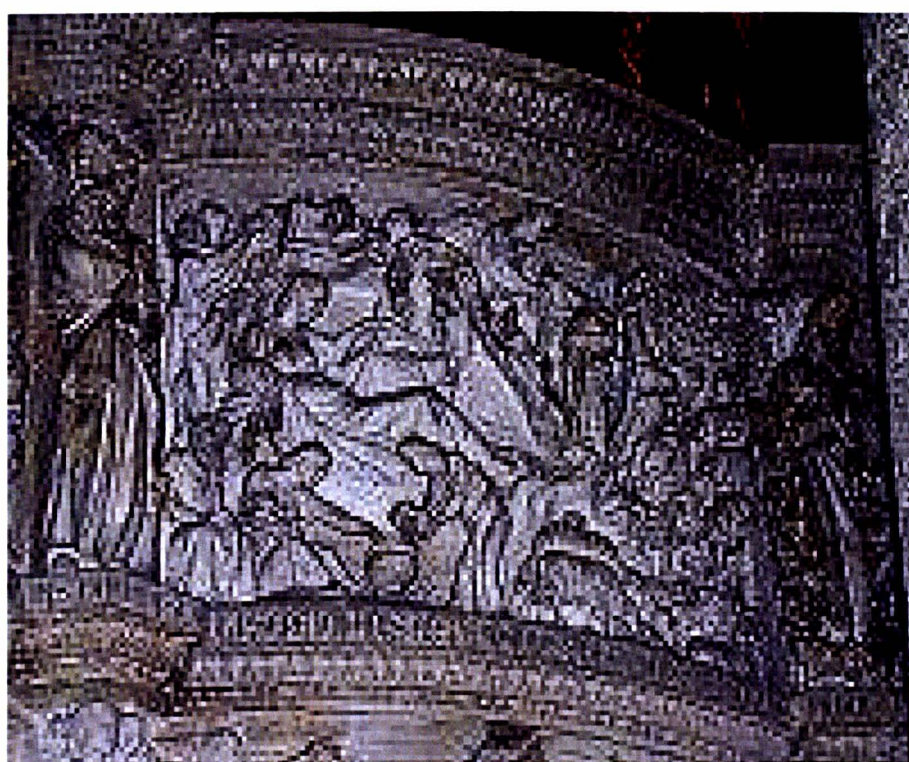


Plate 52 Giovanni Pisano. *Nativity*. 1302. Marble relief. Pulpit, Duomo, Pisa, Italy.



Plate 53 Giotto. *Betrothal of the Virgin*. Early fourteenth century. Fresco. Arena Chapel, Padua, Italy.



Plate 54 Giotto. *Adoration of the Magi*. Early fourteenth century. Fresco. Arena Chapel, Padua, Italy.

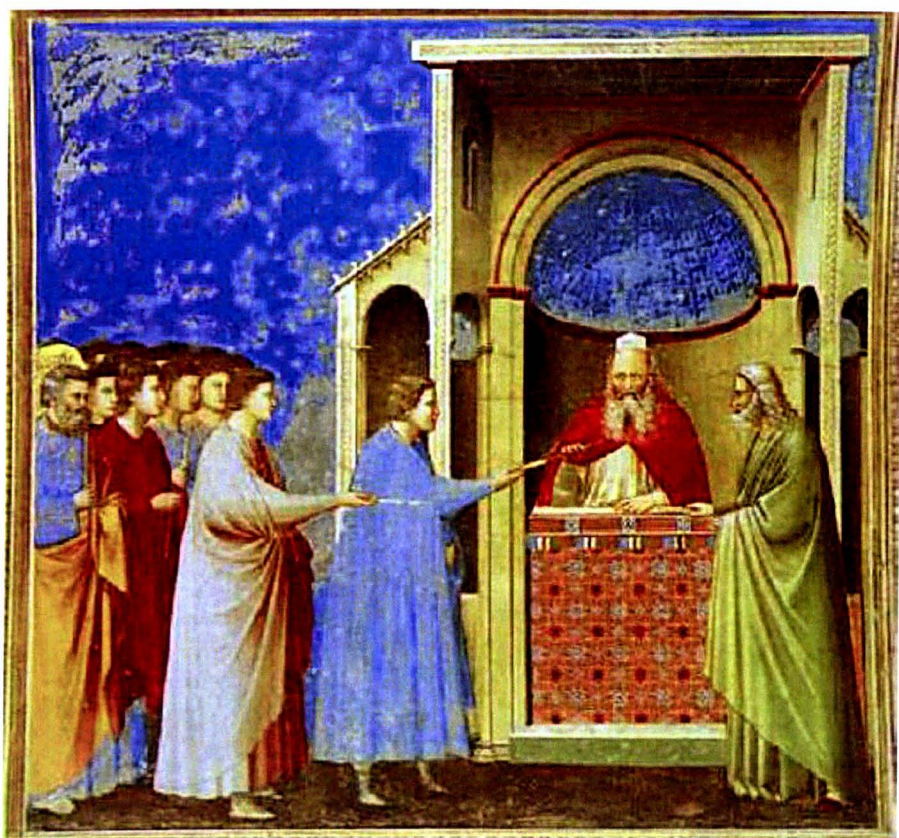


Plate 55 Giotto. *Presentation of the Rods*. Early fourteenth century. Fresco. Arena Chapel, Padua, Italy.

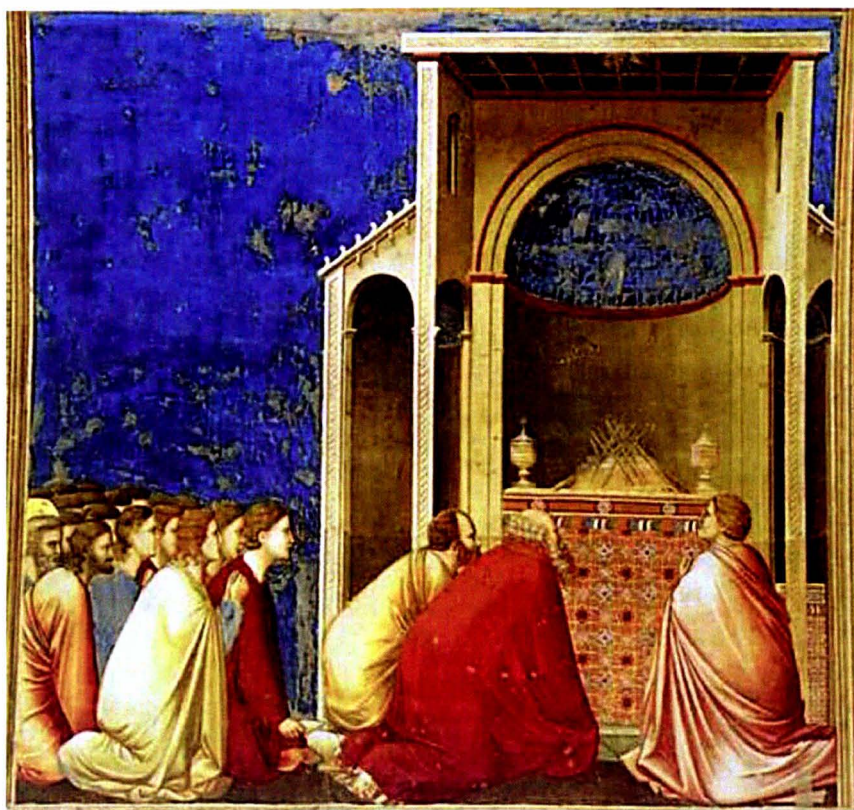


Plate 56 Giotto. *Watching of the Rods*. Early fourteenth century. Fresco. Arena Chapel, Padua, Italy.

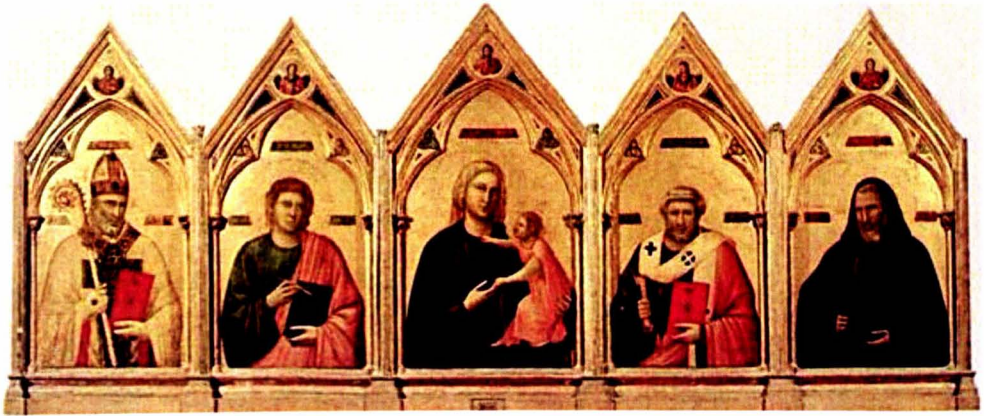


Plate 57 Giotto. The Badia Polyptych. ca. 1300. Tempera on wood. Galleria degli Uffizi, Florence, Italy.



Plate 58 Giotto. *The Last Judgement* (detail). Early fourteenth century. Fresco. Arena Chapel, Padua, Italy.

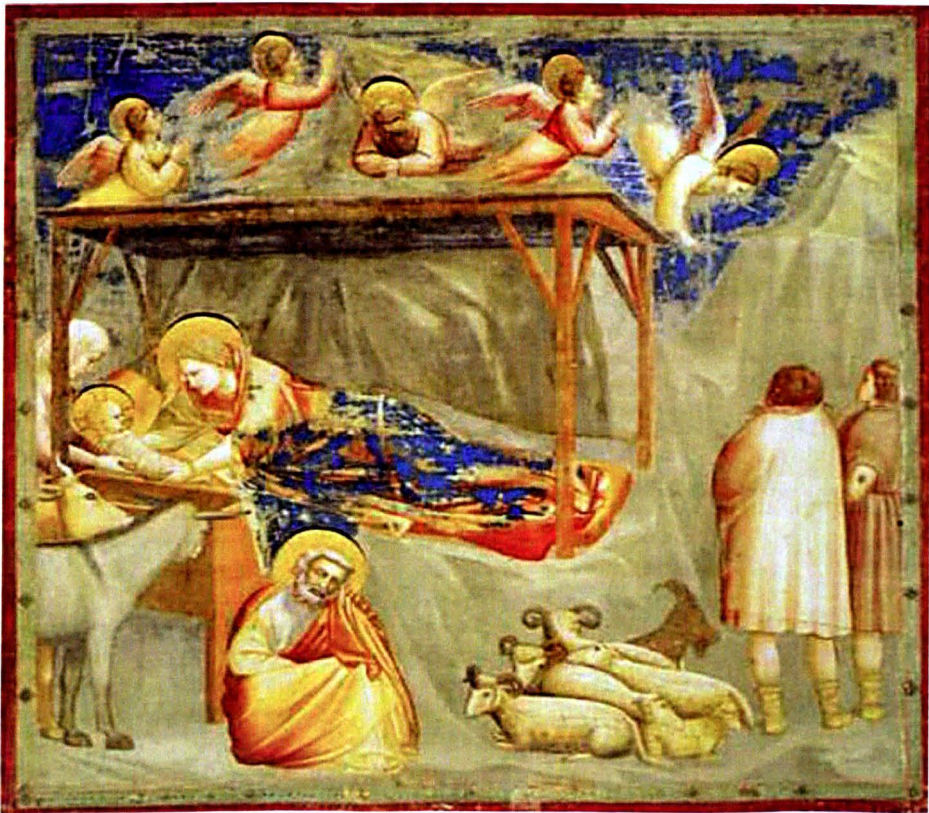


Plate 59 Giotto. *Nativity*. Early fourteenth century. Fresco. Arena Chapel, Padua, Italy.



Plate 60 Giotto. *Presentation of Christ in the Temple*. Early fourteenth century. Fresco.
Arena Chapel, Padua, Italy.



Plate 61 Giotto. *Flight into Egypt*. Early fourteenth century. Fresco. Arena Chapel, Padua, Italy.



Plate 62 Giotto. *Christ disputing with the Elders*. Early fourteenth century. Fresco.
Arena Chapel, Padua, Italy.



Plate 63 Giotto. *Marriage at Cana*. Early fourteenth century. Arena Chapel, Padua, Italy.



Plate 64 Anon. *Flight into Egypt*. Early fourteenth century. Fresco. All Saints Parish Church, Croughton, Northamptonshire, England.



Plate 65 Duccio. *Nativity*. The Maestà. 1311. Tempera on wood. Museo dell' Opera del Duomo, Siena, Italy.



Plate 66 Duccio. *Adoration of the Magi*. The Maestà. 1311. Tempera on wood. Museo dell' Opera del Duomo, Siena, Italy.



Plate 67 Duccio. *Presentation in the Temple*. The Maestà. 1311. Tempera on wood.
Museo dell' Opera del Duomo, Siena, Italy.



Plate 68 Duccio. *Joseph's Dream* (detail), *The Maestà*. 1311. Tempera on wood. Museo dell' Opera del Duomo, Siena, Italy.



Plate 69 Duccio. *Flight into Egypt*. The Maestà. 1311. Tempera on wood. Museo dell' Opera del Duomo, Siena, Italy.



Plate 70 Anon. *Nativity*. Early fourteenth century. Stained glass. St Andrew's Parish Church, East Hagbourne, Oxfordshire, England.

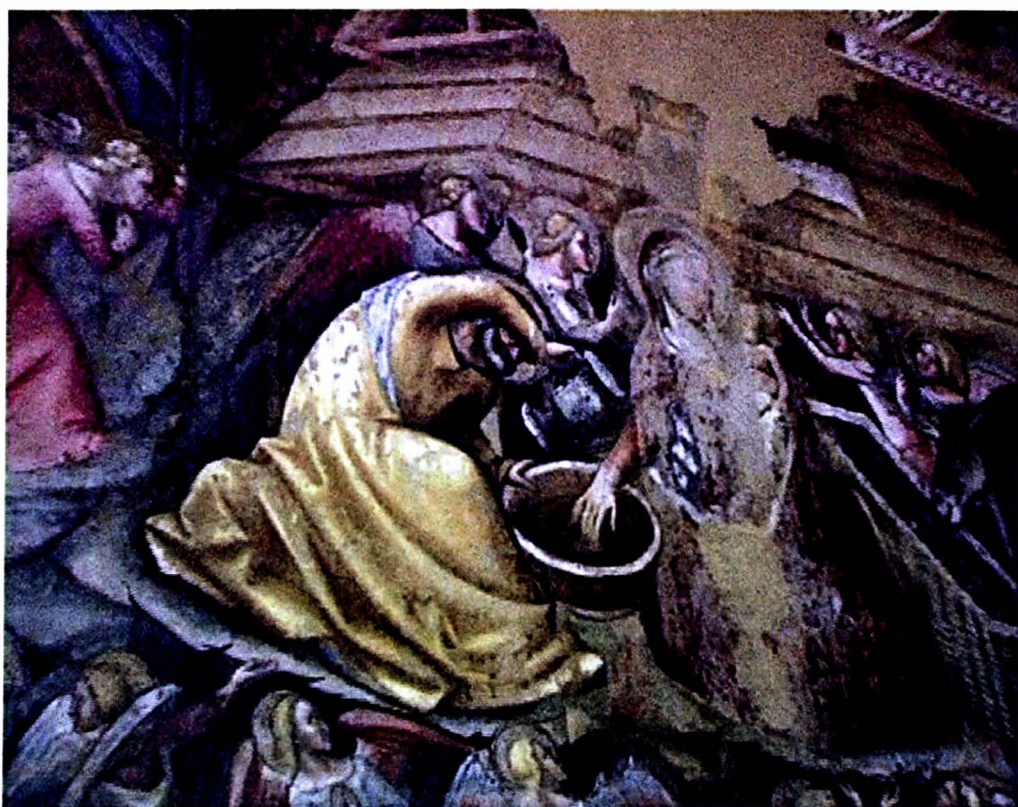


Plate 71 Vitale da Bologna. *Annunciation and Nativity* (detail). 1338. Fresco transferred to canvas. Pinacoteca Nazionale, Bologna, Italy.



Plate 72 Master Bertram. *Nativity* (detail). Petri-Altar also known as the Grabow Altarpiece. ca 1380. Tempera on panel. Kunsthalle Museum, Hamburg, Germany.



Plate 73 Taddeo Gaddi. *Nativity*. 1325. Tempera on panel. Thyssen-Bornemisza Collection, Monastery of Pedralbes, Barcelona, Spain.

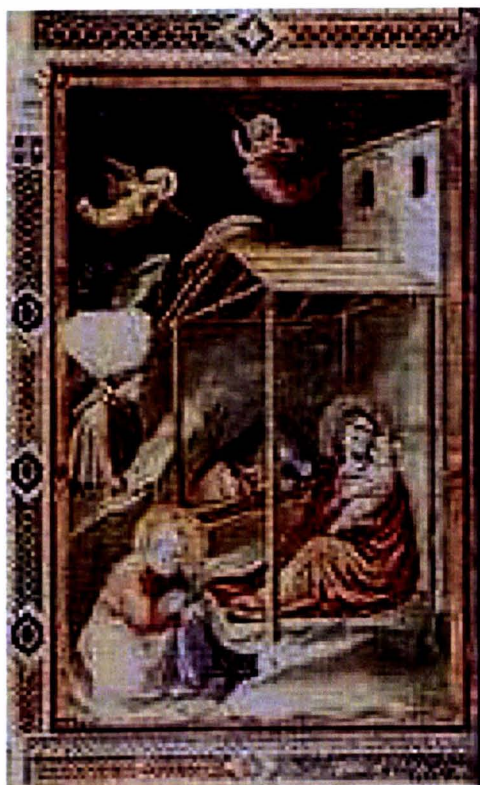


Plate 74 Taddeo Gaddi. *Nativity*. 1332-1338. Fresco. Baroncelli Chapel, Santa Croce, Florence, Italy.



Plate 75 Andrea Orcagna. The Strozzi Altarpiece. 1354-1357. Tempera on wood.
Strozzi Chapel, Santa Maria Novella, Florence, Italy.



Plate 76 Taddeo Gaddi. *Betrothal of the Virgin*. 1332-1338. Fresco. Baroncelli Chapel, Santa Croce, Florence, Italy.



Plate 77 Bernardo Daddi. *Marriage of the Virgin* (detail). Predella panel, San Pancrazio Polyptych. 1335-1340. Tempera on panel. The Royal Collection, England.



Plate 78 Anon. *Betrothal of the Virgin*. Mid 1330s. Marble and terracotta relief. Opera del Duomo, Santa Maria del Fiore, Florence, Italy.



Plate 79 Andrea Orcagna. *Betrothal of the Virgin*. 1359. Marble relief. Tabernacle, Orsanmichele, Florence, Italy.



Plate 80 Niccolò di Buonaccorso. *Betrothal of the Virgin*. 1380. Tempera on wood.
National Gallery, London, England.



Plate 81 Gregorio di Luca. *Betrothal of the Virgin*. Early fifteenth century. Tempera on wood. National Gallery, London, England.



Plate 82 Fra Angelico. *Betrothal of the Virgin*. Predella panel, Cortona Altarpiece. 1433-1434. Tempera on wood. Museo Diocesano, Cortona, Italy.



Plate 83 Domenico Ghirlandaio. *Marriage of the Virgin*. 1486-1490. Fresco. Tornabuoni Chapel, Santa Maria Novella, Florence, Italy.



Plate 84 Domenico Beccafumi. *Betrothal of the Virgin*. 1518. Fresco. Oratory of San Bernardino, Siena, Italy.



Plate 85 Giovanni Mansueti. *Marriage of the Virgin*. Early sixteenth century. Tempera on canvas. San Martino, Burano, Venice, Italy.

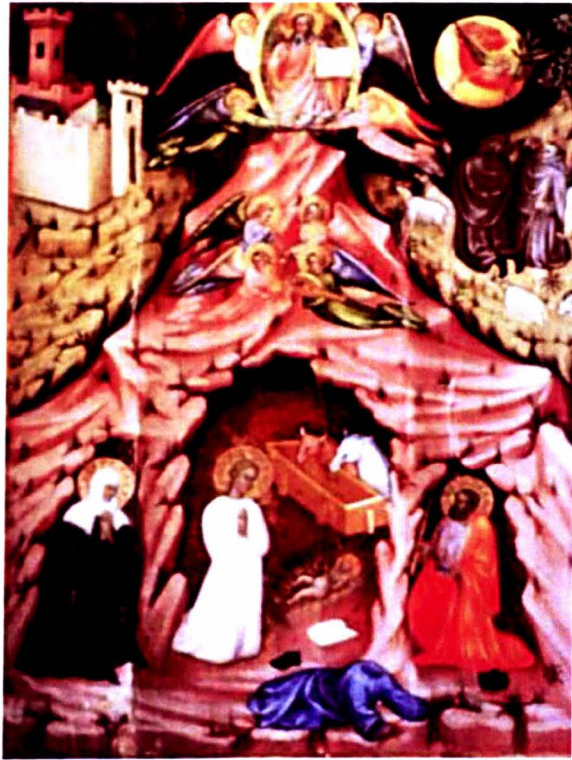


Plate 86 Turino Vanni. *St Bridget's Vision at Bethlehem*. 1390. Tempera on wood.
Museo Nazionale di San Matteo, Pisa, Italy.



Plate 87 Limbourg Brothers. *Nativity*. Manuscript illumination. *Très Riches Heures du Duc de Berry*. 1416. Tempera on vellum. Musée Condé, Chantilly, France.



Plate 88 Robert Campin also known as the Master of Flémalle. *Nativity*. 1420s. Oil on wood. Musée des Beaux Arts, Dijon, France.



Plate 89 Fra Angelico. *Nativity*. 1425-1430. Tempera on panel. Minneapolis Institute of Art, Minneapolis, USA.

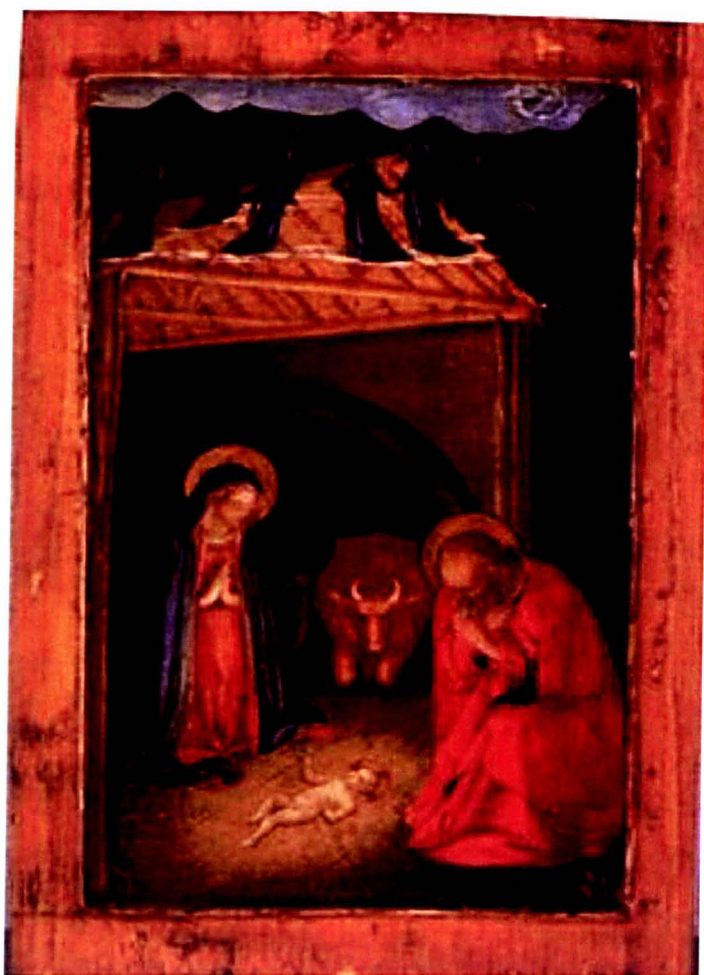


Plate 90 Fra Angelico. *Nativity*. 1430s. Tempera and gold on panel. Pinacoteca Forlì, Civica, Italy.

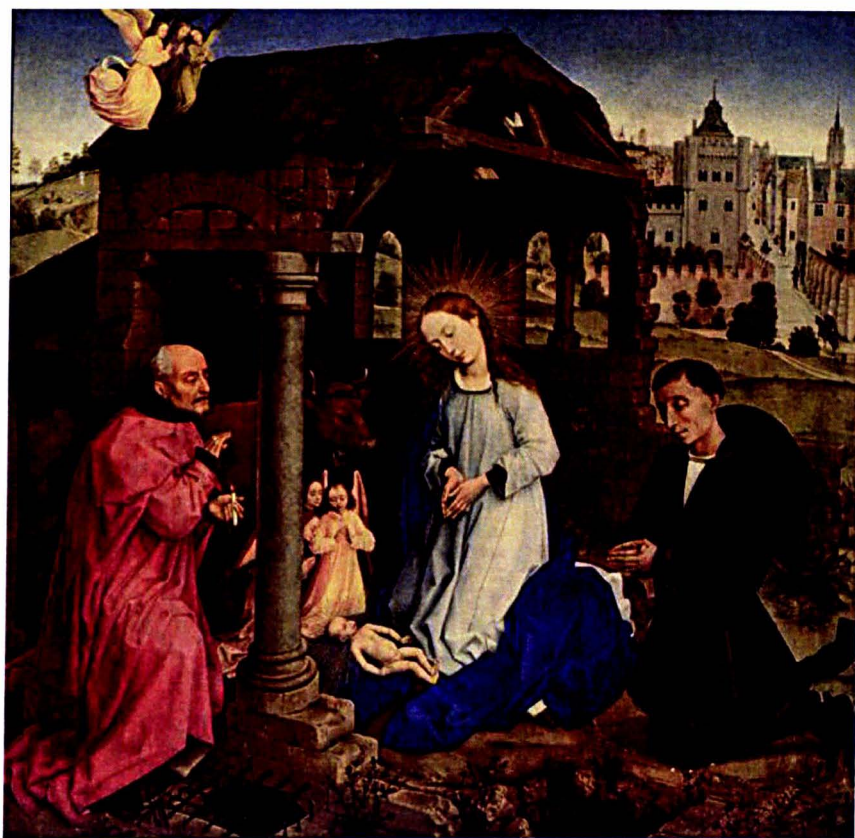


Plate 91 Rogier van der Weyden. *Nativity*. The Middelburg Altarpiece. 1446. Oil on wood. Gemäldegalerie, Berlin, Germany.



Plate 92 Petrus Christus. *Nativity*. Late 1440s. Oil on wood. National Gallery of Art, Washington DC, USA.

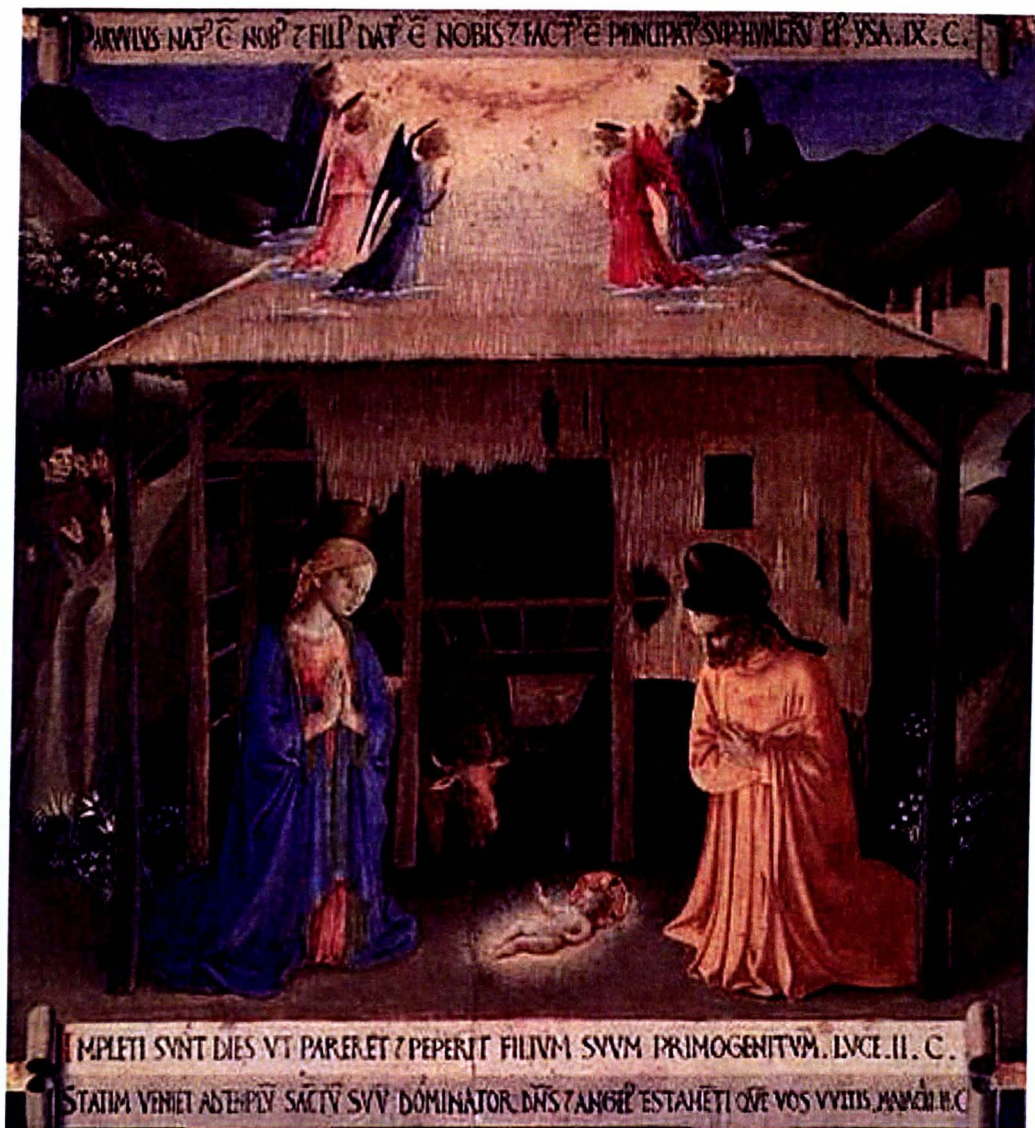


Plate 93 Fra Angelico. *Nativity*. Annunziata Silver Chest. 1451-1453. Tempera on wood. Museo di San Marco, Florence, Italy.



Plate 94 Fra Angelico. *Nativity*. 1450s. Fresco. Cell 5, Convent of San Marco, Florence, Italy.



Plate 95 Hugo van der Goes. *Adoration of the Shepherds*. Central panel, the Portinari Altarpiece. 1475. Oil on wood. Galleria degli Uffizi, Florence, Italy.



Plate 96 Bartolo di Fredi. *Adoration of the Shepherds*. 1374. Tempera on wood. The Cloisters Collection, Metropolitan Museum of Art, New York, USA.



Plate 97 Lorenzo Monaco. *Flight into Egypt*. Early fifteenth century. Tempera on poplar. Staatliches Lindenau-Museum, Altenburg, Germany.



Plate 98 Attrib. Giotto. *Nativity*. Early fourteenth century. Fresco. Lower Church, San Francesco, Assisi, Italy.



Plate 99 Robert Campin known as the Master of Flémalle. The Mérode Altarpiece (detail). 1425-1435. Oil on wood. Cloisters Collection, Metropolitan Museum of Art, New York, USA.

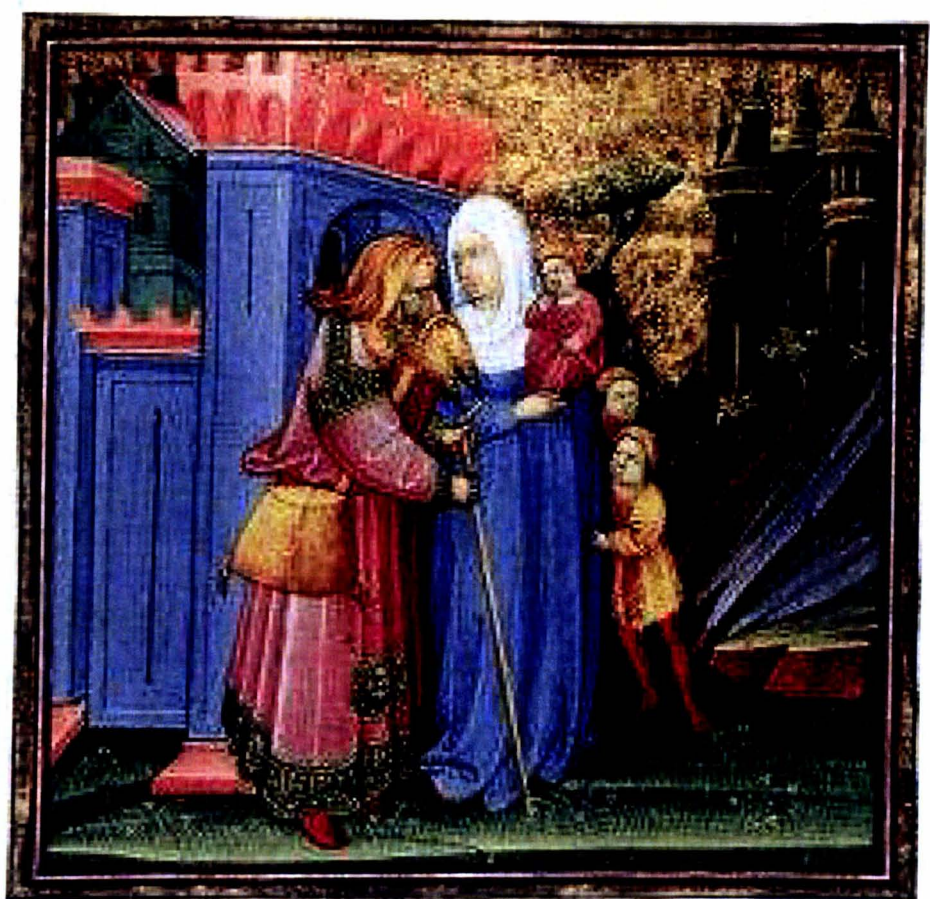


Plate 100 Belbello da Pavia. Manuscript illumination. Mid fifteenth century. Tempera on vellum. Vatican Library, Rome, Italy.



Plate 101 Petrus Christus. *The Holy Family in a Domestic Interior*. 1460. Oil on wood.
Nelson-Atkins Museum of Art, Kansas City, Missouri, USA.



Plate 102 Fra Angelico. *Presentation in the Temple*. Second quarter fifteenth century.
Fresco. Cell 10, Convent of San Marco, Florence, Italy.



Plate 103 Attrib. Botticelli. *The Nativity with the Holy Family*. 1482-1485. Tempera and oil on wood. Isabella Stewart Gardner Museum, Boston, Massachusetts, USA.



Plate 104 Michelangelo. *Doni Tondo*. 1504-1506. Oil on panel. Galleria degli Uffizi, Florence, Italy.

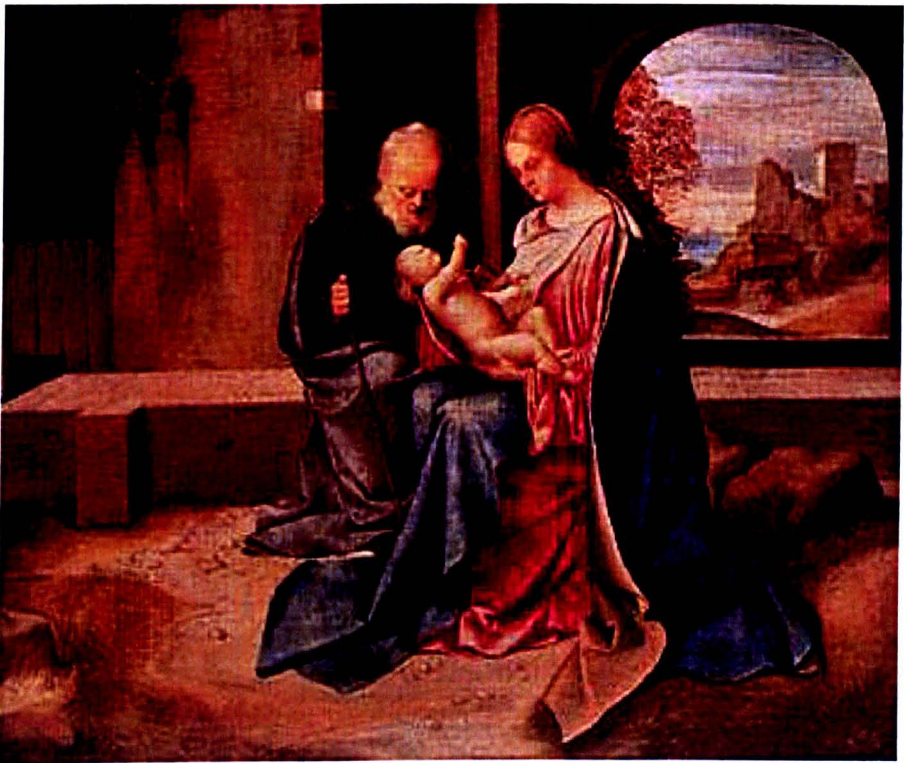


Plate 105 Giorgione. *The Holy Family*. 1508. Oil on panel. National Gallery of Art, Washington DC, USA.



Plate 106 Albrecht Altdorfer. *Rest on the Flight into Egypt*. 1510. Oil on panel.
Staatliche Museum, Gemaldergalerie, Berlin, Germany.



Plate 107 Lorenzo Lotto. *The Christ Child exalted by the Virgin and St Joseph*. 1512-1516. Pen and brown ink on paper. British Museum, London, England.



Plate 108 Lorenzo Lotto. *Madonna and Child with St. Jerome, St. Joseph and St. Anne.* 1534. Oil on canvas. Galleria degli Uffizi, Florence, Italy.



Plate 109 Limbourg Brothers. *Flight into Egypt*. Manuscript illumination. *Très Riches Heures du Duc de Berry*. 1409. Tempera and ink on vellum. Metropolitan Museum of Art, New York, USA.



Plate 110 Fra Angelico. *Adoration of the Magi*. Predella panel, Cortona Altarpiece. 1433-1434. Tempera on wood. Museo Diocesano, Cortona, Italy.



Plate 111 Fra Angelico. *Flight into Egypt*. Annunziata Silver Chest. 1451-1453.
Tempera on wood. Museo di San Marco, Florence, Italy.



Plate 112 Martin Schongauer. *Flight into Egypt*. 1470. Engraving. Rijksmuseum, Amsterdam, The Netherlands.



Plate 113 Cosimo Tura. *Flight into Egypt*. 1470s. Tempera on wood. The Jules Bache Collection, Metropolitan Museum of Art, New York, USA.



Plate 114 Benozzo Gozzoli. *Procession of the Magi*. 1461. Fresco. Chapel of the Magi, Palazzo Medici-Riccardi, Via Cavour, Florence, Italy.



Plate 115 Lorenzo Monaco. *Adoration of the Magi*. 1422. Tempera on wood. Galleria degli Uffizi, Florence, Italy.



Plate 116 Gentile da Fabriano. *Adoration of the Magi*. 1423. Tempera on panel.
Galleria degli Uffizi, Florence, Italy.



Plate 117 Anon. *Cosimo de' Medici*. 1465. Bronze medallion. The Samuel H Kress Collection, National Gallery of Art, Washington DC, USA.



Plate 118 Jacopo Pontormo. *Cosimo de' Medici*. 1516. Oil on canvas. Galleria degli Uffizi, Florence, Italy.

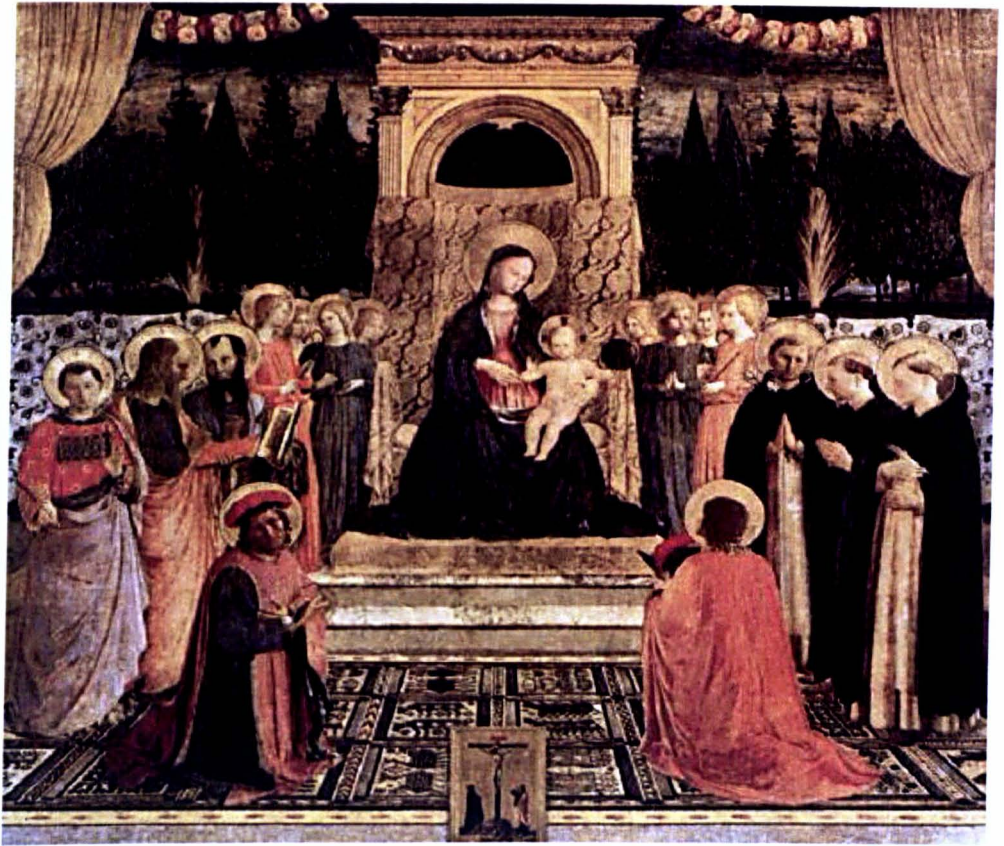


Plate 119 Fra Angelico. *San Marco Altarpiece*. 1438-1444. Tempera on wood. Museo di San Marco, Florence, Italy.



Plate 120 Albrecht Dürer. *The Seven Sorrows of the Virgin*. 1496. Oil on pine panel.
Gemäldegalerie, Dresden, Germany.



Plate 121 Vittore Carpaccio. *Flight into Egypt*. 1500. Oil on panel. National Gallery of Art, Washington DC, USA.



Plate 122 Fra Bartolomeo. *Rest on the Flight into Egypt with St John the Baptist*. 1509.
Oil on panel. John Paul Getty Museum, Los Angeles, California, USA.



Plate 123 Luca Signorelli. *The Holy Family*. 1490. Oil on panel. Galleria degli Uffizi, Florence, Italy.



Plate 124 Lorenzo Costa. *Nativity*. 1490. Tempera on wood. Musée des Beaux-Arts, Lyons, France.



Plate 125 Raphael. *The Holy Family with St Elizabeth and St John the Baptist* also known as *The Canigiani Holy Family*. 1507. Oil on wood. Alte Pinakothek, Munich, Germany.



Plate 126 Luca della Robbia. *Nativity with Gloria in Excelsis*. Mid 1470s. Vitrified terracotta relief. Boston Museum of Fine Arts, Boston, Massachusetts, USA.



Plate 127 Botticelli. *Adoration of the Magi*. 1475. Tempera on panel. Galleria degli Uffizi, Florence, Italy.



Plate 128 Fiorenzo di Lorenzo. *Adoration of the Shepherds* (detail). 1490. Tempera on panel. Galleria Nazionale dell ' Umbria, Perugia, Italy.



Plate 129 Gerard David. *Adoration of the Magi*. 1495. Oil on wood. Alte Pinakothek, Munich, Germany.



Plate 130 Cima da Conegliano. *Adoration of the Shepherds*. 1504. Tempera on panel.
Santa Maria del Carmelo detta di Carmini, Venice, Italy.



Plate 131 Titian. *The Holy Family with a Shepherd*. 1510. Oil on canvas. National Gallery, London, England.



Plate 132 Correggio. *Rest on the Flight into Egypt*. 1520s. Oil on canvas. Galleria Nazionale, Parma, Italy.



Plate 133 Raphael. *The Holy Family below the oak*. 1518. Oil on wood. Museo del Prado, Madrid, Spain.



Plate 134 Raphael. *The Holy Family with St John*. ca 1511. Oil on panel.
Kunsthistorisches Museum, Vienna, Austria.

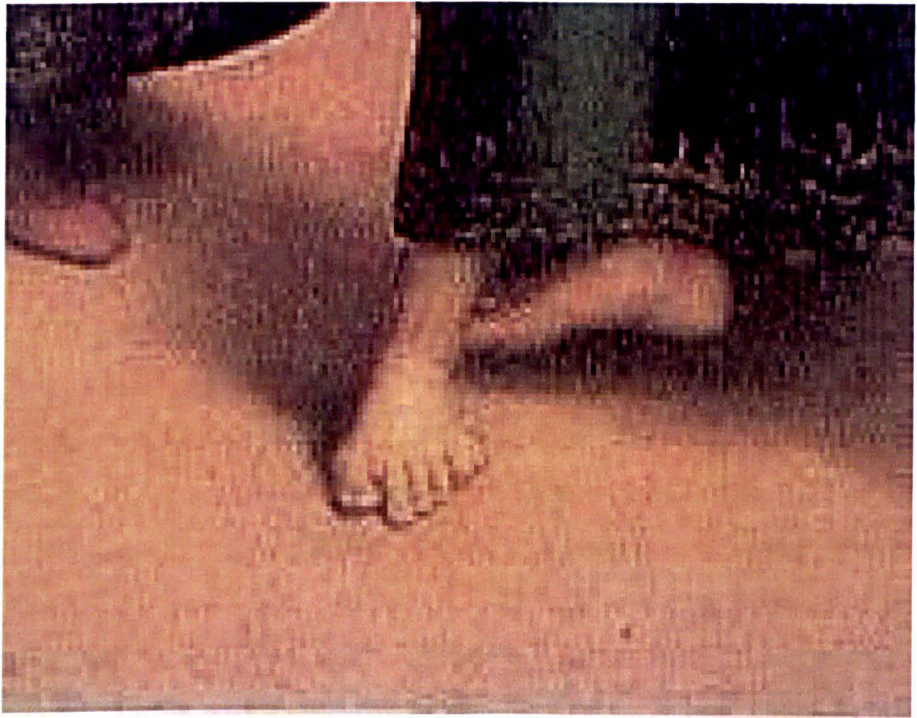


Plate 135 Raphael. *The Betrothal of the Virgin* (detail). 1504. Oil on wood. Pinacoteca di Brera, Milan, Italy.



Plate 136 Cima da Conegliano. *Rest on the flight into Egypt with Saints John the Baptist and Lucy*. Last decade of the fifteenth century. Tempera and oil on wood. Calouste Gulbenkian Museum, Lisbon, Portugal.



Plate 137 Fra Bartolomeo. *The Holy Family with St John the Baptist*. 1500-1507. Tempera on panel. Thyssen-Bornemisza Collection, Lugarno Castagnola, Switzerland.



Plate 138 Agnolo Bronzino. *The Panciatichi Holy Family*. 1540. Oil on wood. Galleria degli Uffizi, Florence, Italy



Plate 139 El Greco. *Adoration of the Shepherds*. 1570. Oil on canvas. Private Collection.



Plate 140 Giotto. *Washing of the feet*. Early fourteenth century. Fresco. Arena Chapel, Padua, Italy.



Plate 141 Duccio. *Peter denying Christ*. The Maestà. 1311. Tempera on panel. Museo dell' Opera del Duomo, Siena, Italy.

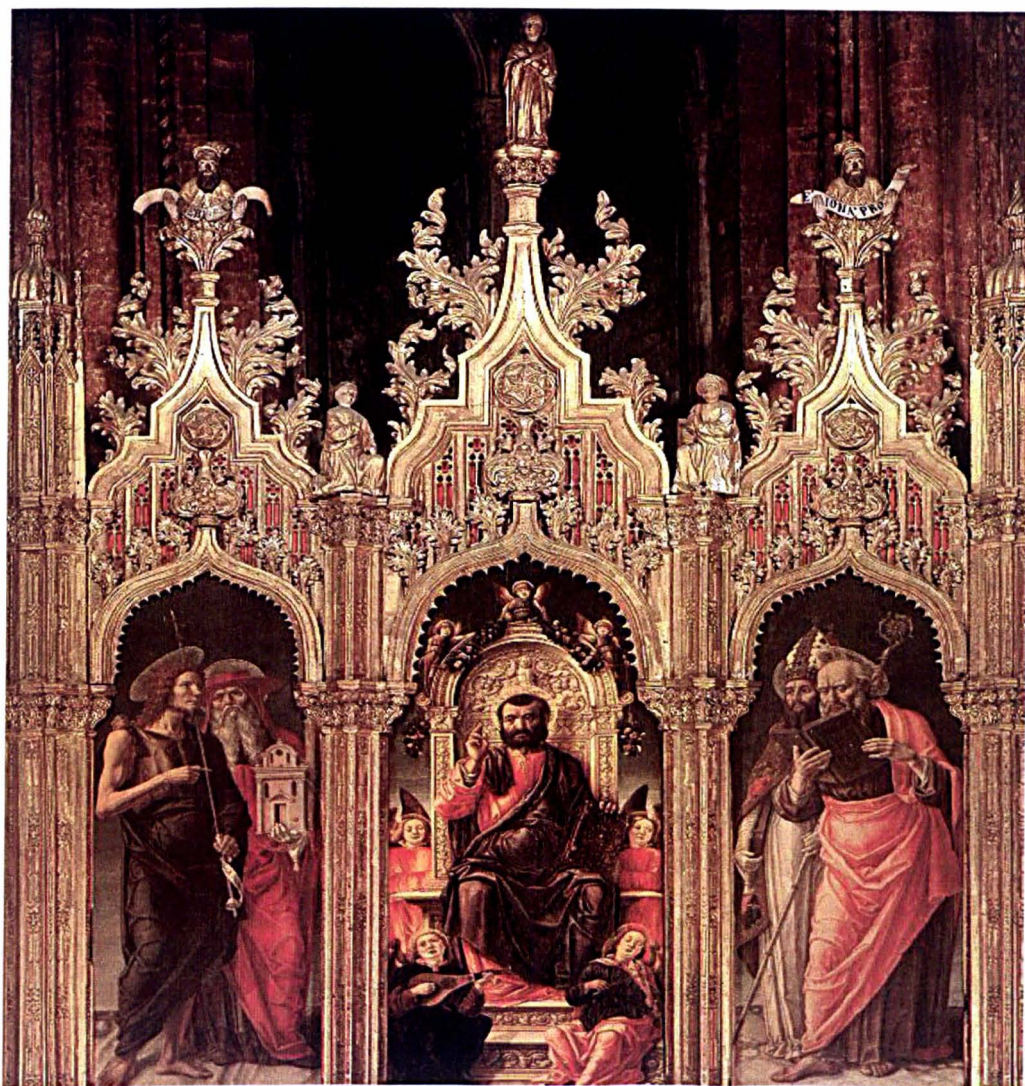


Plate 142 Bartolomeo Vivarini. *St Mark enthroned with Saints John the Baptist, Jerome, Nicholas and Peter*. 1474. Oil on panel. Santa Maria Gloriosa dei Frari, Venice, Italy.



Plate 143 Jacopo Bassano. *Flight into Egypt*. 1545. Oil on canvas. Norton Simon Museum, Pasadena, California, USA.



Plate 144 Masaccio. *The Tribute Money*. 1427. Fresco. Brancacci Chapel, Santa Maria del Carmine, Florence, Italy.



Plate 145 Veronese. *Madonna enthroned with Saints*. 1562. Oil on canvas. Galleria dell'Accademia, Venice, Italy.



Plate 146 Masaccio. St Peter healing the sick with his shadow. 1427. Fresco. Brancacci Chapel, Santa Maria del Carmine, Florence, Italy.



Plate 147 Tintoretto. *Adoration of the Shepherds*. 1579. Oil on canvas. Sala Grande, Scuola di San Rocco, Venice, Italy.



Plate 148 Tintoretto. *Adoration of the Shepherds* (detail). 1579. Oil on canvas. Sala Grande, Scuola di San Rocco, Venice, Italy.

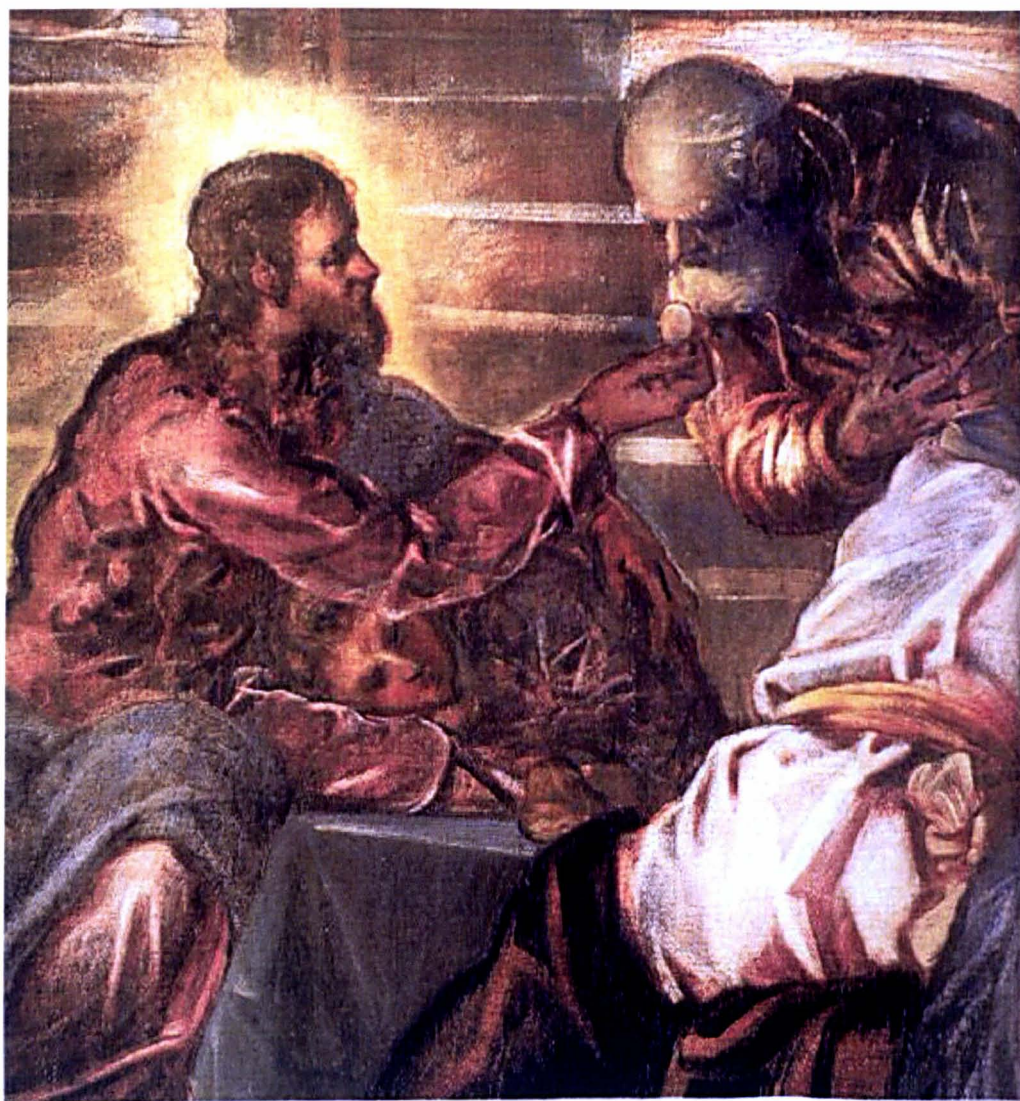


Plate 149 Tintoretto. *The Last Supper* (detail). 1580. Oil on canvas. Sala Grande, Scuola di San Rocco, Venice, Italy.

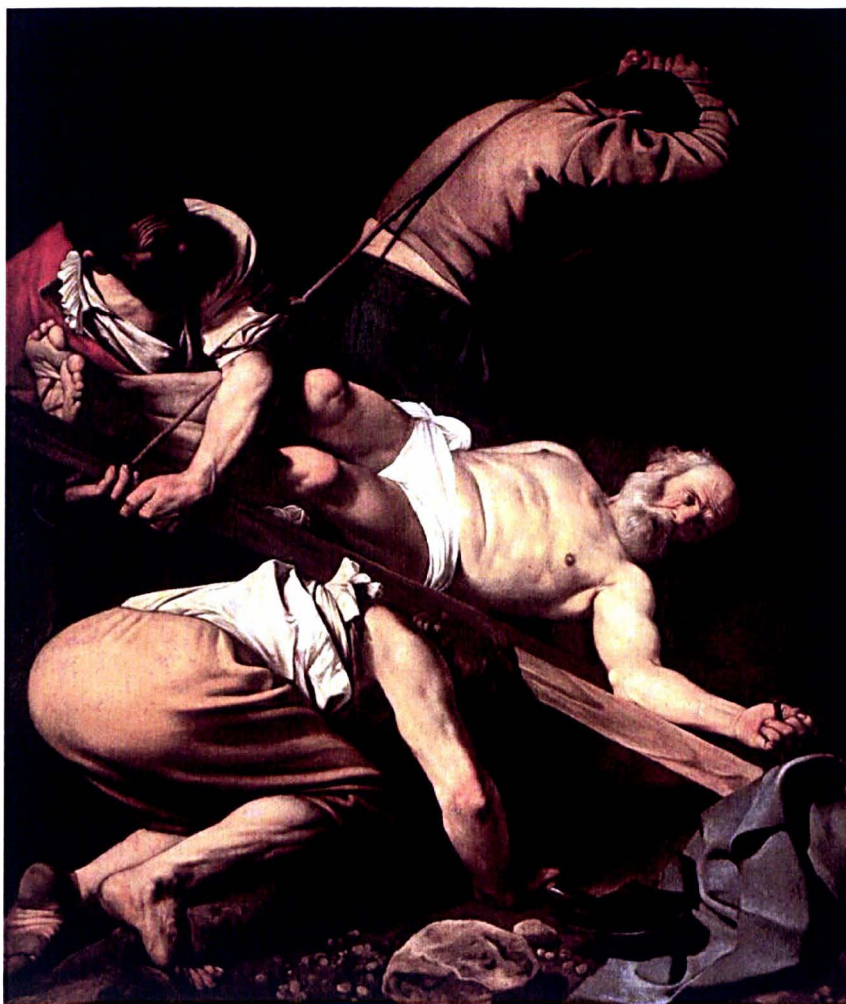


Plate 150 Caravaggio. *Martyrdom of St Peter*. 1601. Oil on canvas. Santa Maria del Popolo, Rome, Italy.



Plate 151 Jacopo Bassano. *Adoration of the Shepherds*. 1545. Oil on canvas. The Royal Collection, Windsor, England.

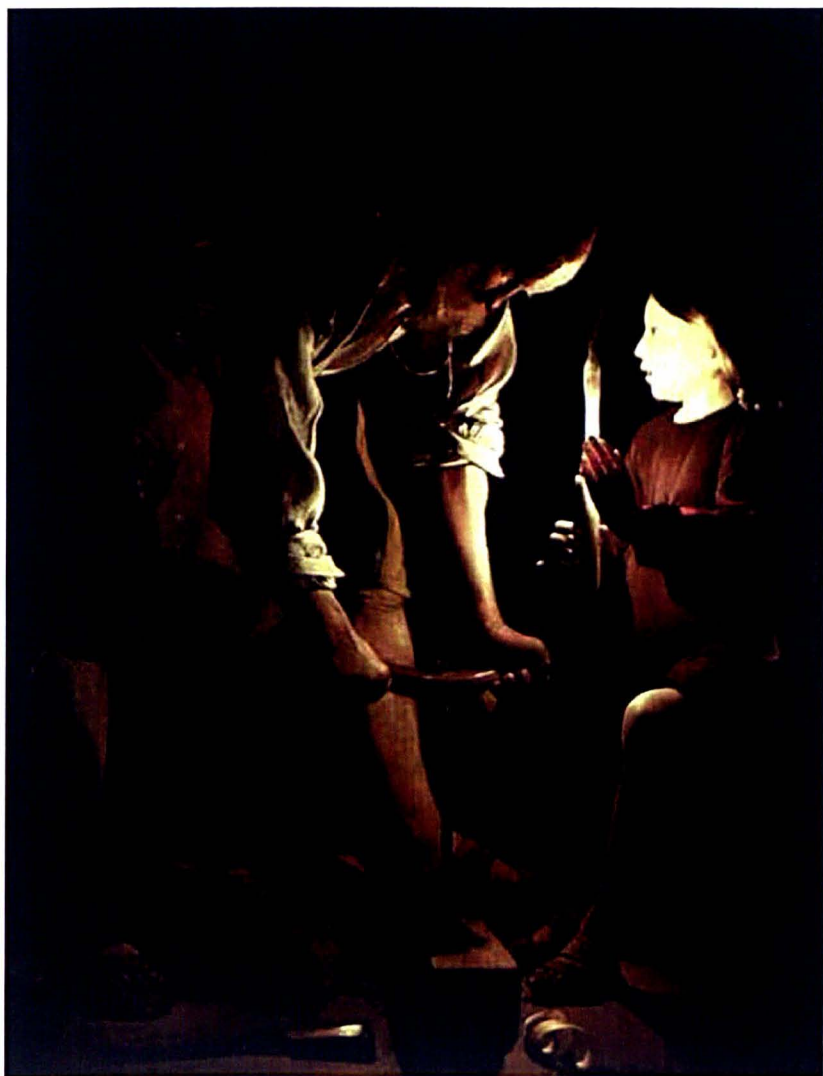


Plate 152 Georges de la Tour. St Joseph the Carpenter. 1640. Oil on canvas. Louvre Museum, Paris, France.



Plate 153 Raphael. The Holy Family. 1518. Oil on canvas. Louvre Museum, Paris, France.

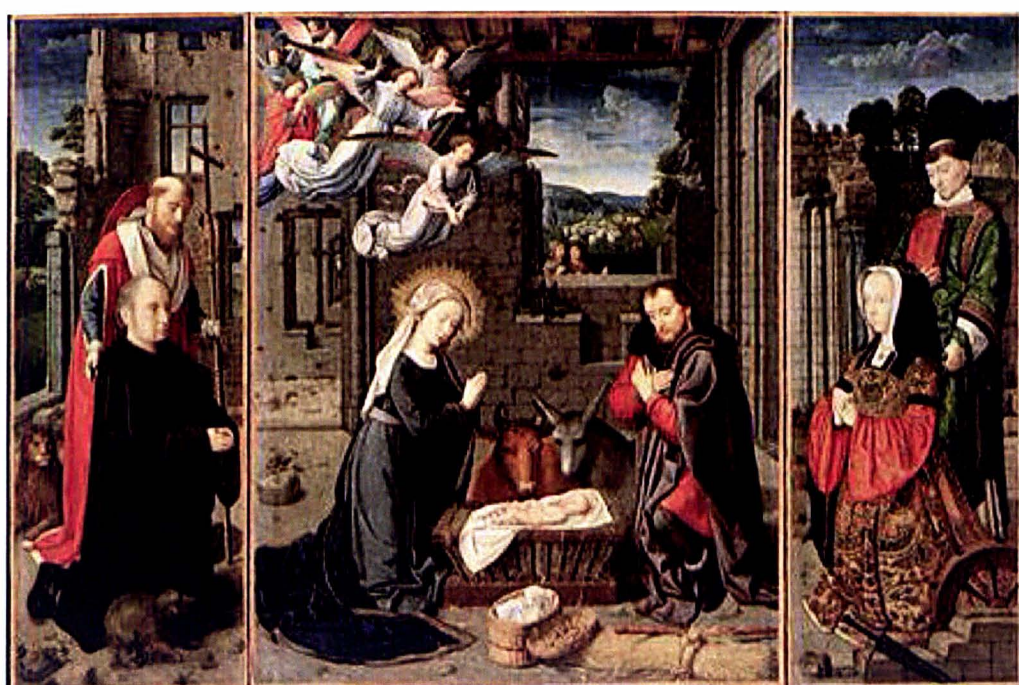


Plate 154 Gerard David. *Nativity with donors*. 1512. Oil on canvas. The Jules Bache Collection, Metropolitan Museum of Art, New York, USA.



Plate 155 Lorenzo Lotto. *Nativity*. 1523. Oil on panel. Samuel H Kress Collection, National Gallery of Art, Washington DC, USA.



Plate 156 Lorenzo Lotto. *The Holy Family with St Catherine of Alexandria*. 1534. Oil on canvas. Accademia Carrara di Belle Arti, Bergamo, Italy.



Plate 157 Lorenzo Lotto. *Adoration of the Shepherds*. 1534. Oil on wood. National Gallery, London, England.



Plate 158 Moretto da Brescia. *St Joseph*. Probably from a triptych. 1540. Oil on wood.
National Gallery, London, England.



Plate 159 Federico Barocci. *Rest on the Flight into Egypt*. 1570. Oil on canvas.
Pinacoteca, Vatican, Rome, Italy.



Plate 160 Federico Barocci. *The Holy Family with the infant St John the Baptist and a cat*. 1575. Oil on canvas. National Gallery, London, England.



Plate 161 El Greco. *St Joseph and the Christ Child*. 1597-1599. Oil on canvas. Toledo Cathedral, Toledo, Spain.



*Vir iustus puerus à iusto, cum virgine iusta,
celsa Joseph tenuit culmina iustitiae.*

Plate 162 Christophorus Blancus. *The Conversation of Jesus, Mary and Joseph*. Early seventeenth century. Engraving. *Jerónimo Gracián's Summary of the Excellencies of St Joseph*. Biblioteca mística carmelitana, vol. 16; Burgos: Monte Carmelo, pp. 373-483, 1933.



Plate 163 Bartolomé Carducho. *Flight into Egypt*. 1600. Oil on canvas. The Hermitage, St Petersburg, Russia.



Plate 164 Guido Reni. *St Joseph with the infant Christ in his arms*. 1635. Oil on canvas.
The Hermitage, St Petersburg, Russia.

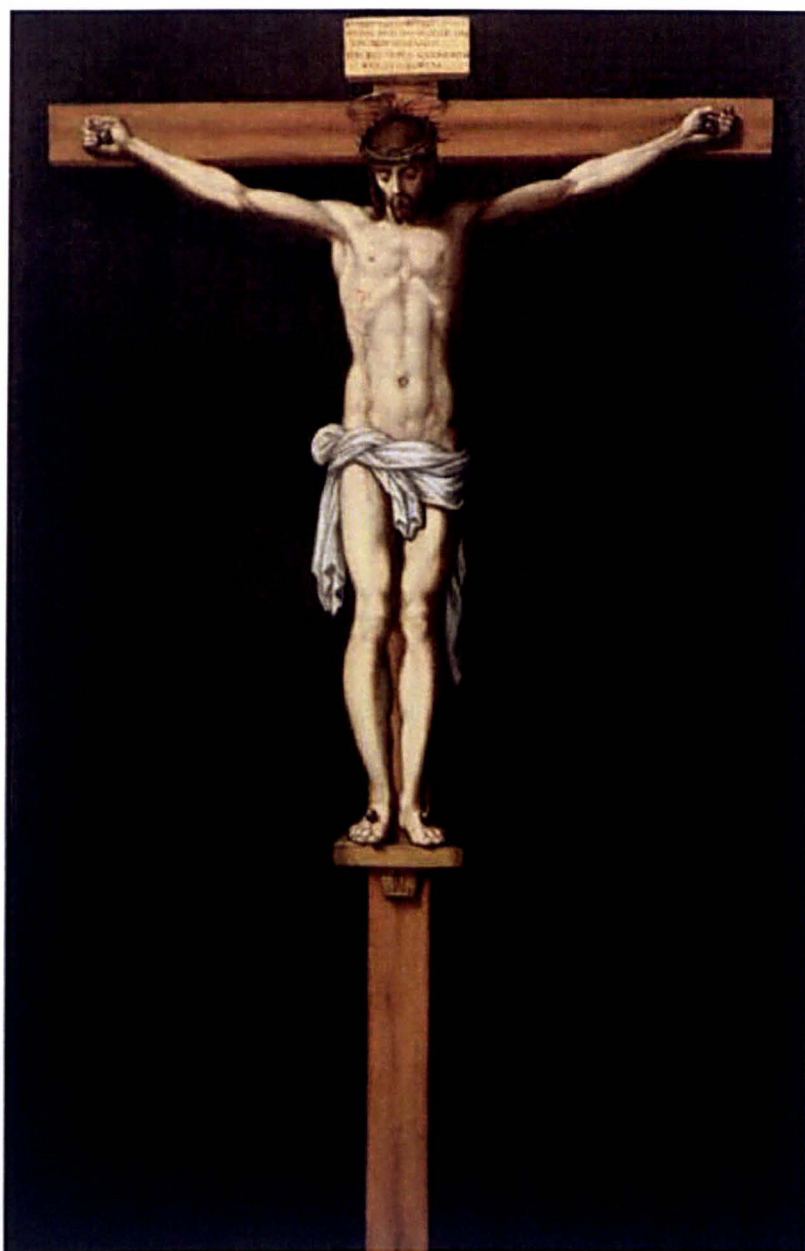


Plate 165 Francisco Pacheco. *Christ on the Cross*. 1614. Polychromic sculpture. The Instituto Gómez-Moreno de la Fundación Rodríguez-Acosta, Granada, Spain.



Plate 166 Francisco de Herrera the Elder. *St Joseph and the Christ Child*. 1645. Oil on canvas. Szépművészeti Museum, Budapest, Hungary.



Plate 167 Nicolas Poussin. *The Holy Family on the steps*. 1648. Oil on canvas. Leonard C Hanna Jnr Fund, Cleveland Museum of Art, Ohio, USA.



Plate 168 Bartolomé Esteban Murillo. *Flight into Egypt*. 1645. Oil on canvas. Museum of Fine Art, Budapest, Hungary.

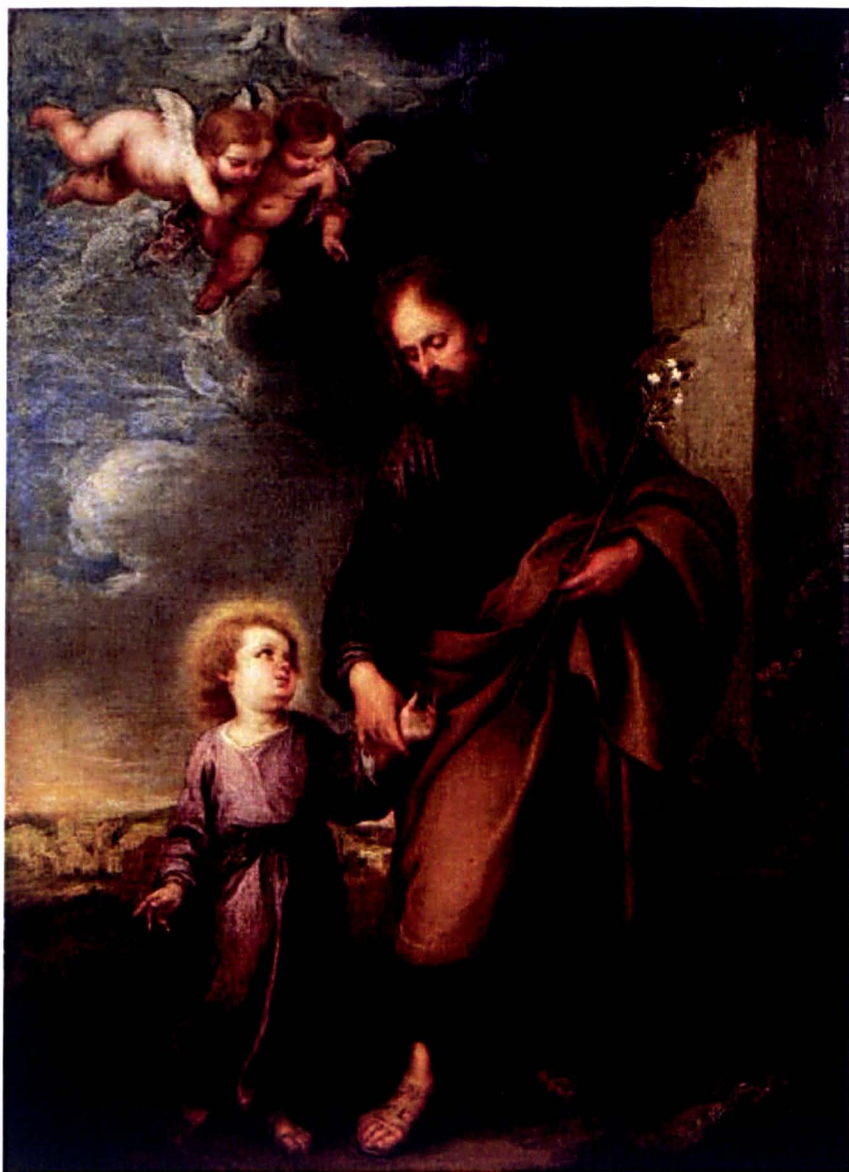


Plate 169 Bartolomé Esteban Murillo. *St Joseph leading the Christ Child*. 1670. Oil on canvas. The Hermitage, St Petersburg, Russia.



Plate 170 Bartolomé Esteban Murillo. *Joseph with the infant Christ*. 1665. Oil on canvas. Museum of Fine Art, Seville, Spain.



Plate 171 Bartolomé Esteban Murillo. *Heavenly and Earthly Trinities*. 1680. Oil on canvas. National Gallery, London, England.



Plate 172 Gregorio Lazzarini. *Adoration of the Magi*. 1704. Oil on canvas. Upper hall , Scuola Grande dei Carmini, Venice, Italy.



Plate 173 Giovanni Battista Tiepolo. *Nativity*. 1732. Oil on canvas. Basilica di San Marco, Venice, Italy.



Plate 174 Johann Friedrich Overbeck. *Adoration of the Kings*. 1813. Oil on panel.
Kunsthalle Museum, Hamburg, Germany.



Plate 175 Sir John Everett Millais. *Christ in the house of his parents*. 1849-1850. Oil on canvas. Tate Britain, London, England.



Plate 176 Sir Edward Burne-Jones. *Star of Bethlehem*. 1880s. Watercolour, gouache, oil and tempera on paper overlaid on canvas. Birmingham Museums and Art Gallery, Birmingham, England.



Plate 177 Eric Gill. *Nativity with the Adoration of the Magi*. 1922. Relief. Portland stone with added colour. Private Collection. The Bridgeman Art Gallery, London, England.